



WeCo Monitoring Quick Guide

- PC windows Windows 10
- WeCo Monitor Software
- Netframe 3.5 or superior
- USB 232 Converter with screw terminal (not included)
- Latest driver and firmware available from the USB-RS22 converter supplier
- Cable RJ 45 232 (included in the battery kit)
- Latest firmware for WeCo 4K4 Available (enquiries: weco@weco.uk.com)



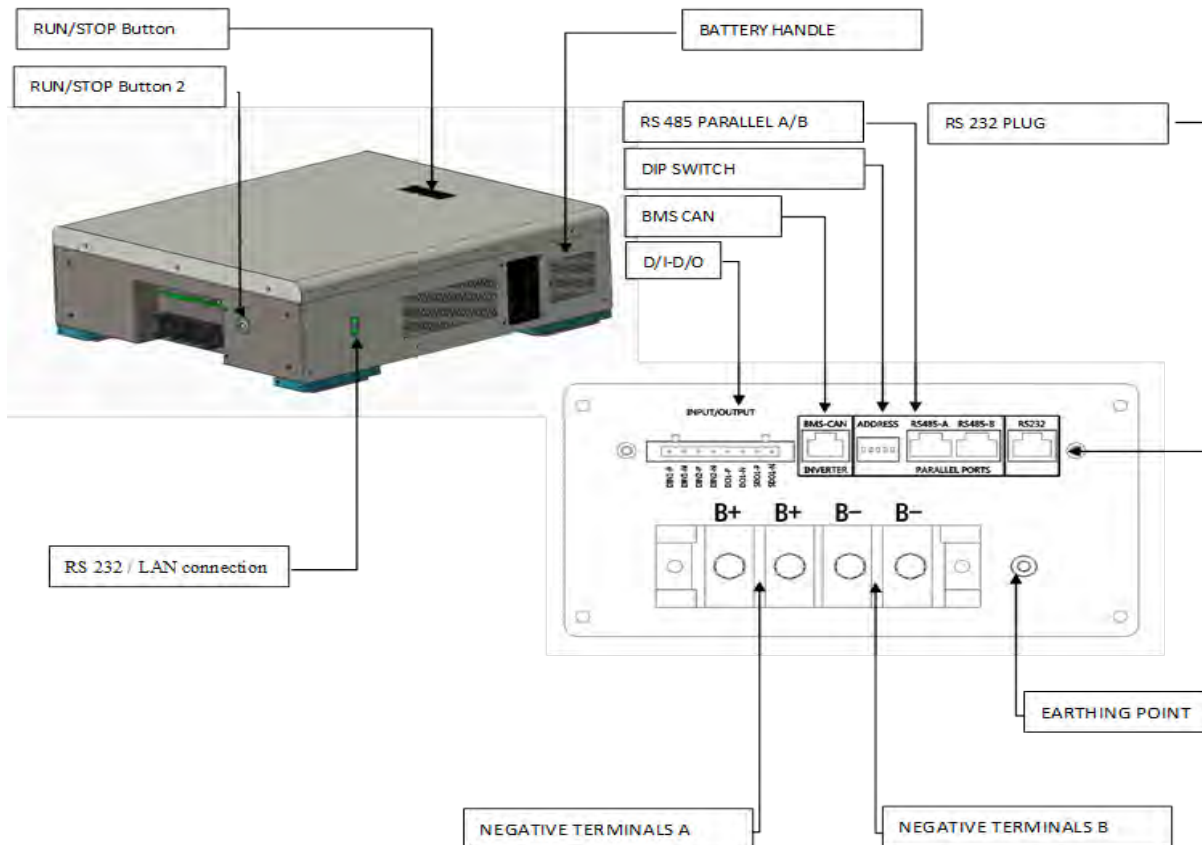
USER FREE ACCESS



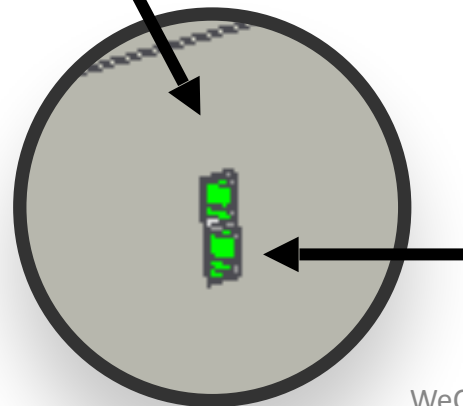
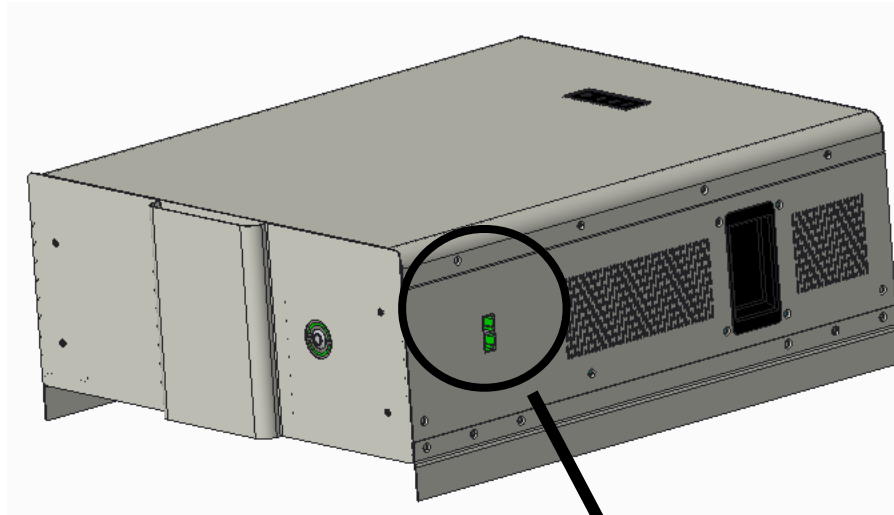
RESTRICTED ACCESS

PASSWORD:

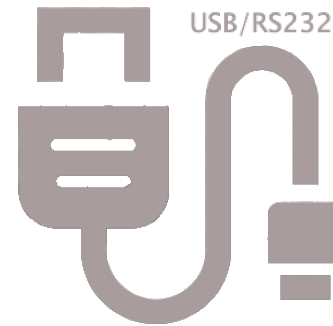
The battery has 2 RS 232 Ports, one on the side one in the connection HUB
Never use the two ports at the same time



RS 232 RJ45 port is located on the side of the battery



RS 232
CONNECTION



RS 232/USB serial converter

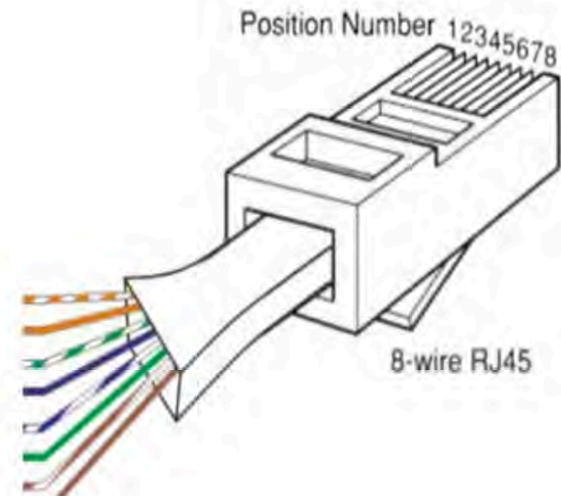


1. Standard USB/rs232 Converter (to be purchased by the installer)
2. Screw Terminal DB9 TX RX GND to be connected with the USB-RS232 Converter
3. Connect the RJ 45 rs 232 Cable provided with the battery
4. Plug the USB terminal of the converter into the PC port
5. From Windows Menu, search for DEVICE MANAGER
6. From DEVICE MANAGER search for the COM/LPT
7. Identify the COM number of the converter by removing and insert the USB plug
8. Select it and search any new driver for the converter by following the instructions in the specific section of the Windows Menu
9. Open the ZIP file WeCo Monitor.
10. Drag/drop the folder- WeCo_Monitor into the desktop.
11. Open the folder and select> WeCo_Monitor.exe (open it)

The logo for WeCo, featuring the word "WeCo" in a stylized red font.

WeCo_Monitor.exe

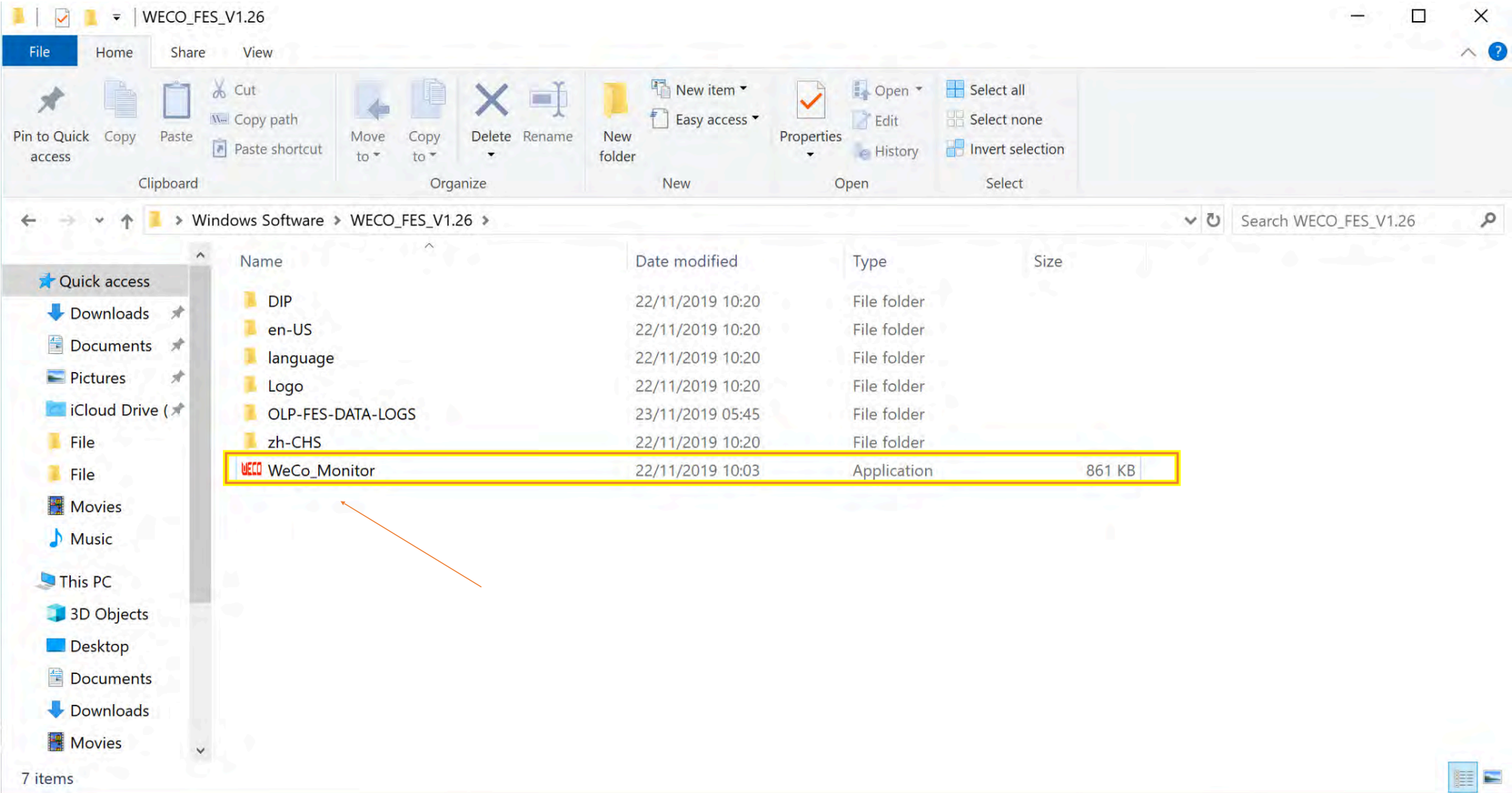
SERIAL CONVERTER RS 232/USB PIN OUT



RJ45,A side:

No	1	2	3	4	5	6	7	8
colour	Orange white	Orange	Green white	Green	/	/	/	/
definition	RS232-TX	RS232-RX	RS232-GND					

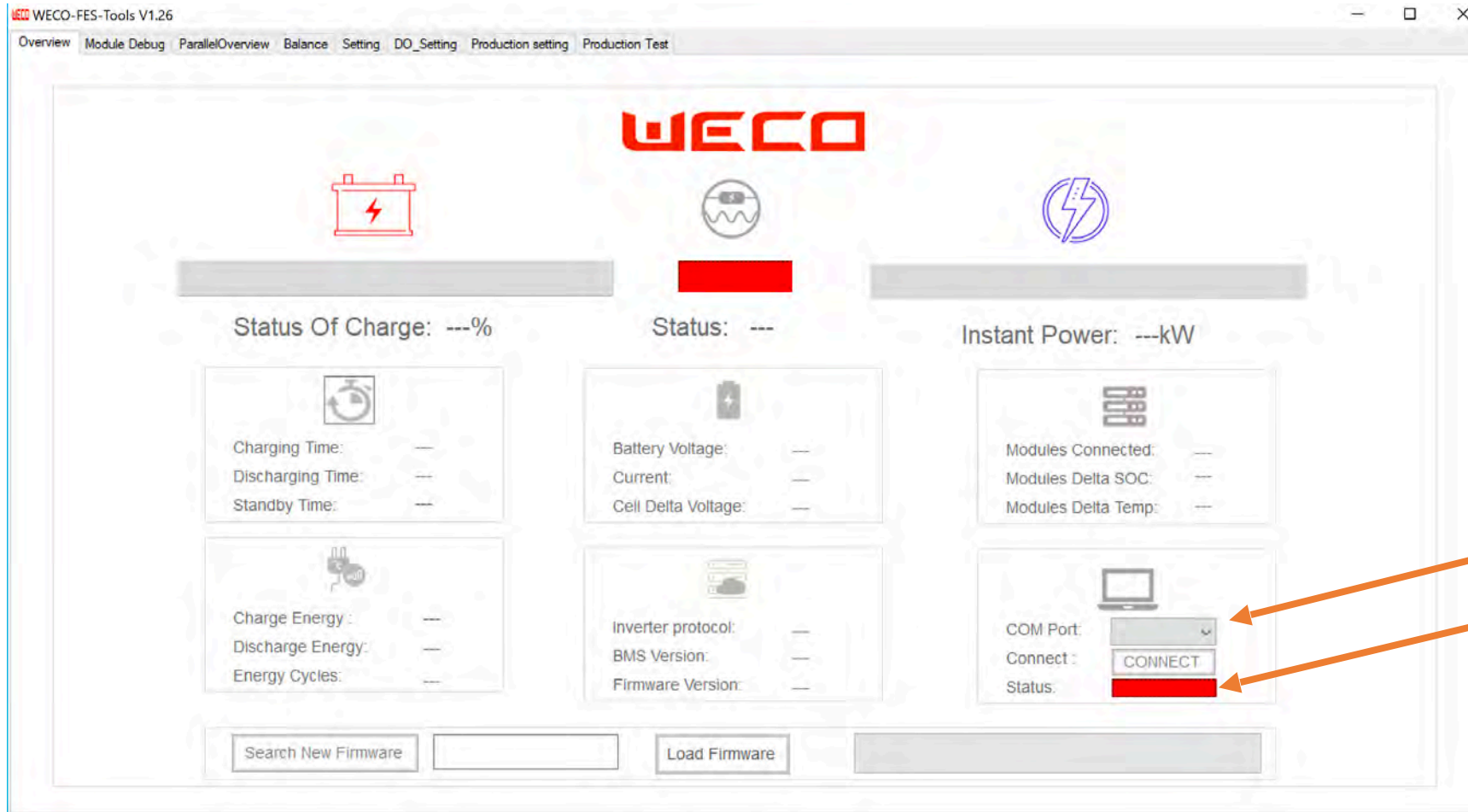
Select the WeCo monitor File



Software Access -USER FREE-



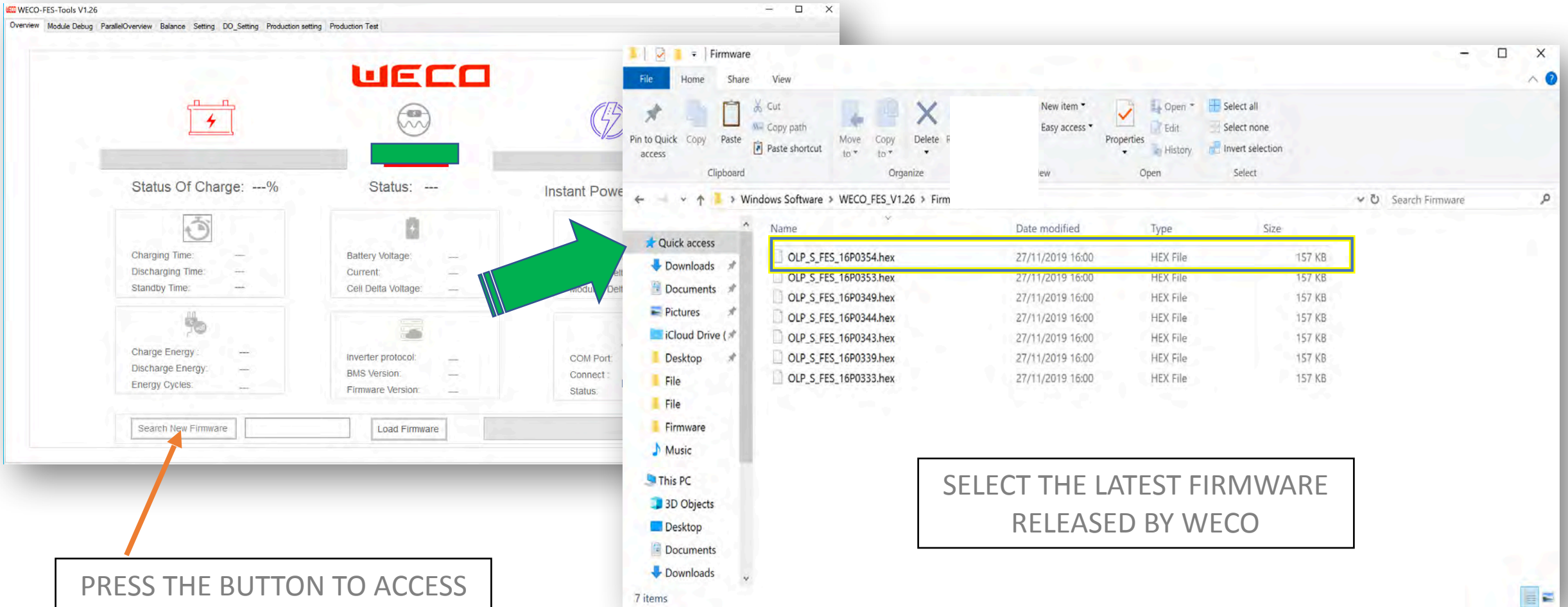
COM selection and Program Start-up



SELECT THE COM AND PRESS
CONNECT

RED BAR BECOME GREEN IF THE
CONNECTION IS STABLE

Search from the latest firmware



The screenshot shows the WECO-FES-Tools V1.26 interface on the left and a File Explorer window on the right. The File Explorer window is open to the 'Firmware' folder, displaying a list of files. A green arrow points from the 'Search New Firmware' button in the WECO-FES-Tools interface to the File Explorer window. A yellow box highlights the first file in the list, 'OLP_S_FES_16P0354.hex'. A text box at the bottom right contains the instruction: 'SELECT THE LATEST FIRMWARE RELEASED BY WECO'.

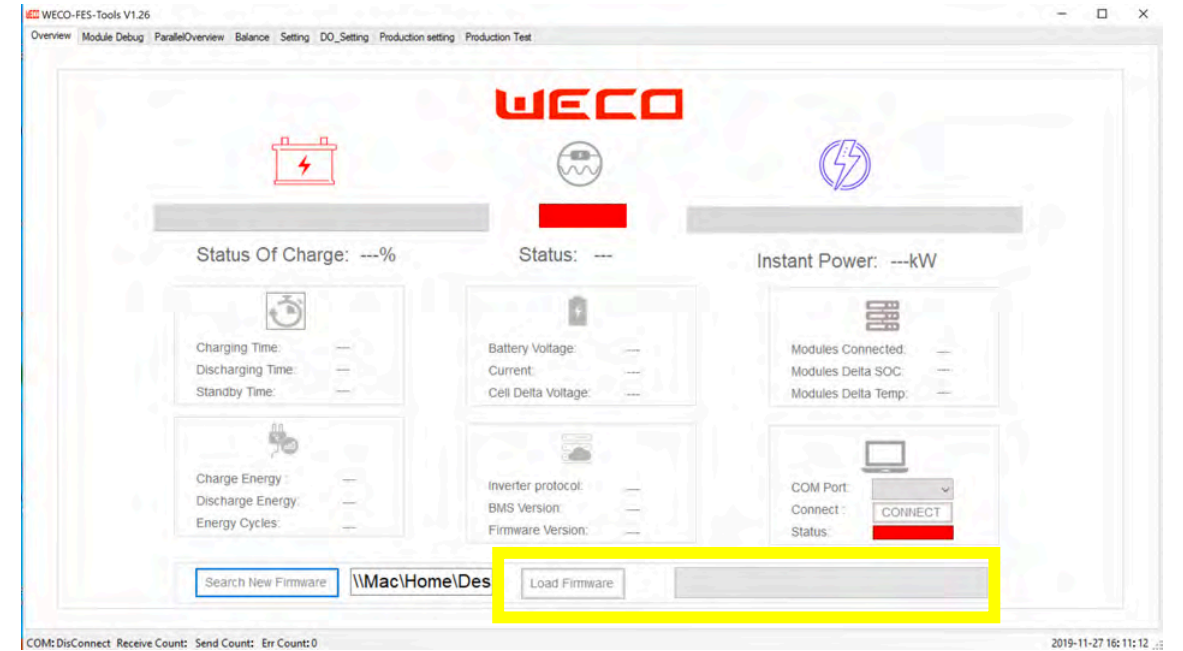
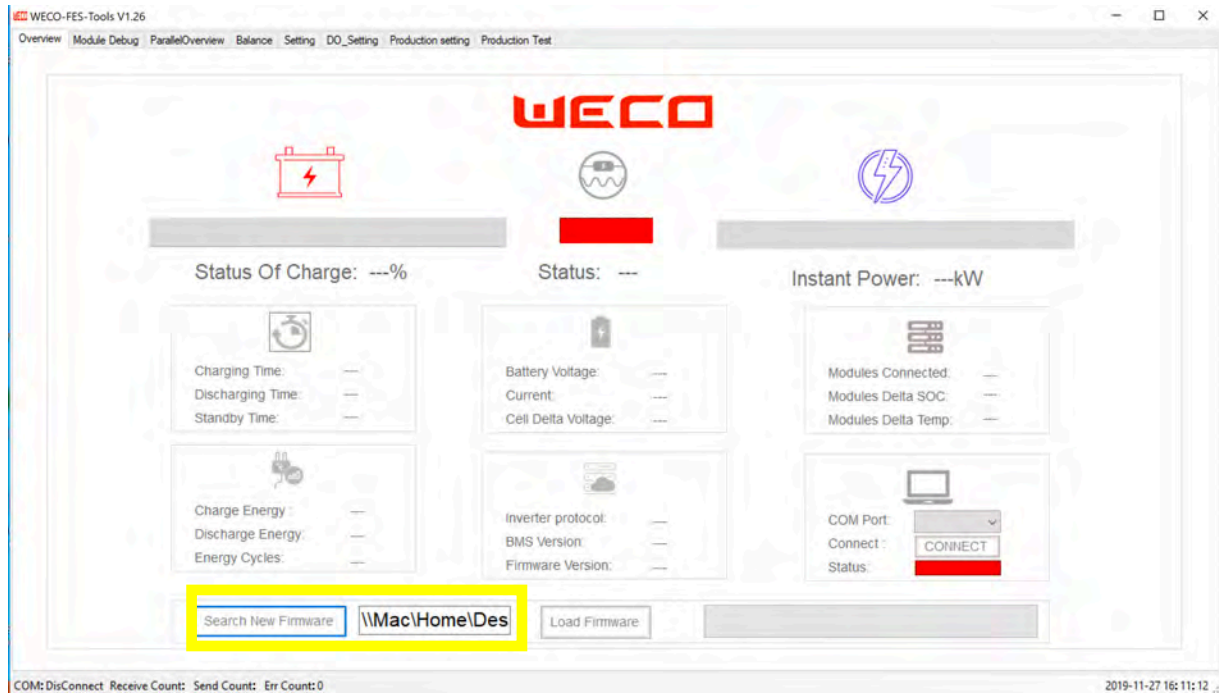
Name	Date modified	Type	Size
OLP_S_FES_16P0354.hex	27/11/2019 16:00	HEX File	157 KB
OLP_S_FES_16P0353.hex	27/11/2019 16:00	HEX File	157 KB
OLP_S_FES_16P0349.hex	27/11/2019 16:00	HEX File	157 KB
OLP_S_FES_16P0344.hex	27/11/2019 16:00	HEX File	157 KB
OLP_S_FES_16P0343.hex	27/11/2019 16:00	HEX File	157 KB
OLP_S_FES_16P0339.hex	27/11/2019 16:00	HEX File	157 KB
OLP_S_FES_16P0333.hex	27/11/2019 16:00	HEX File	157 KB

PRESS THE BUTTON TO ACCESS
TO THE FIRMWARE FOLDER

SELECT THE LATEST FIRMWARE
RELEASED BY WECO



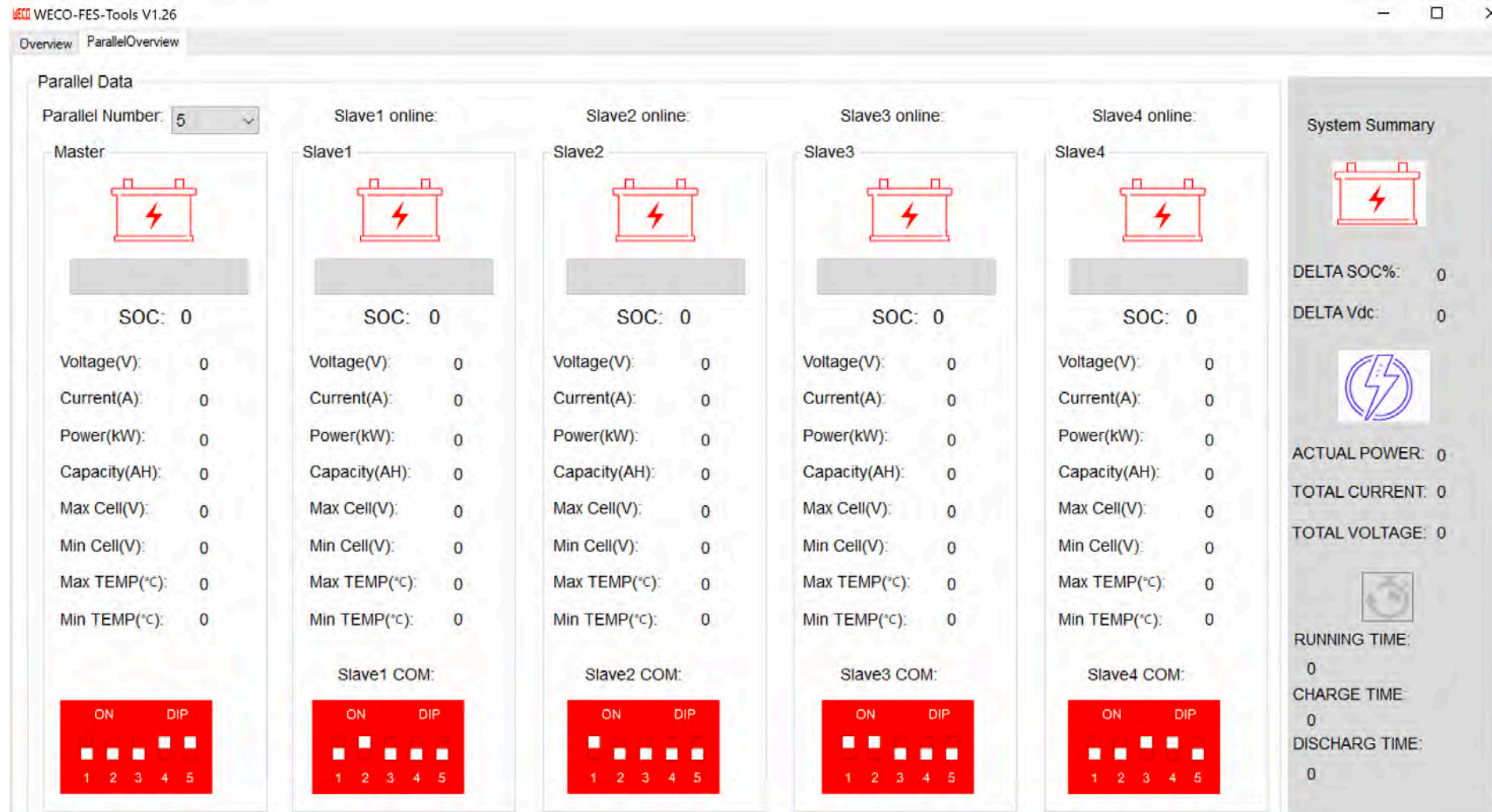
Upload the firmware
Press load firmware to upgrade



MAKE SURE THE FIRMWARE HAS
BEEN UPLOADED

PRESS LOAD AND WAIT FOR THE
UPLOADING PROCESS

Battery Parallel Overview

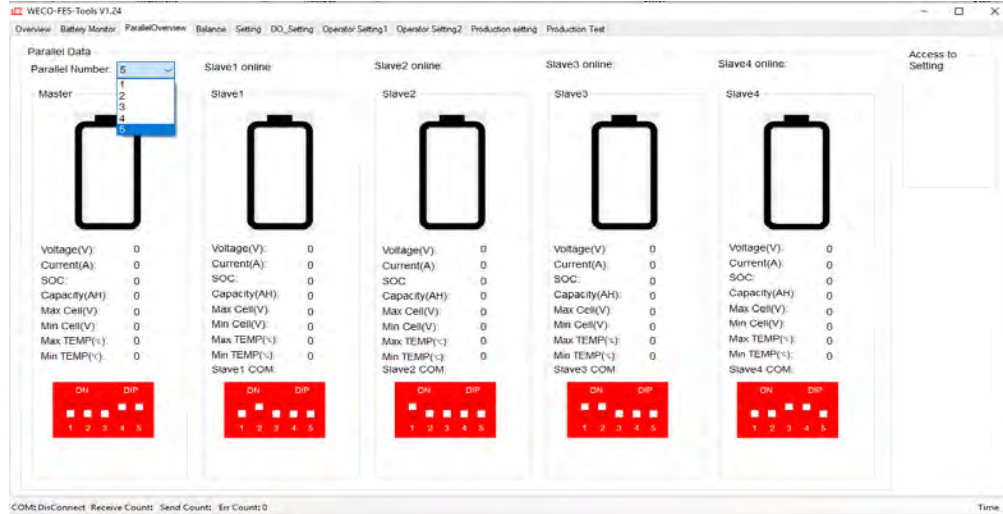




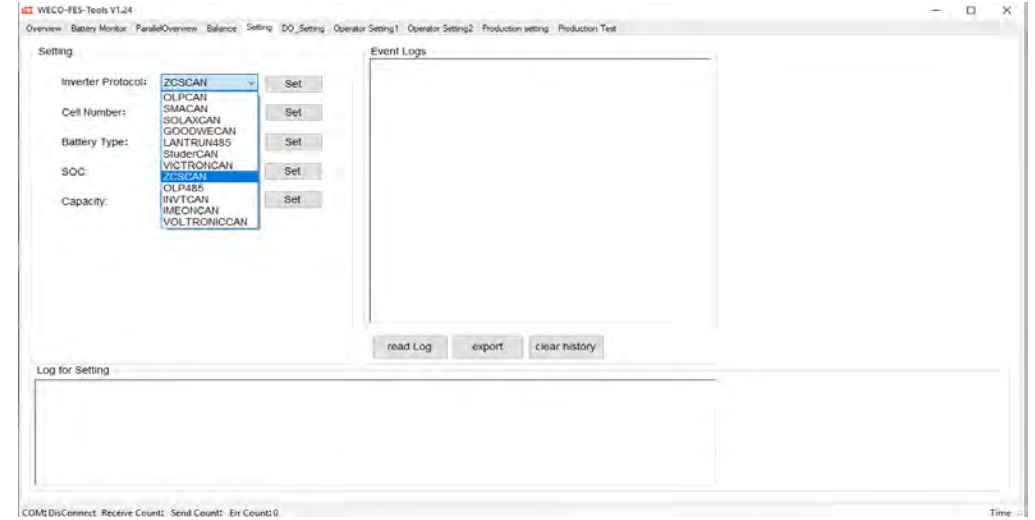
AUTHORIZED OPERATORS SECTION



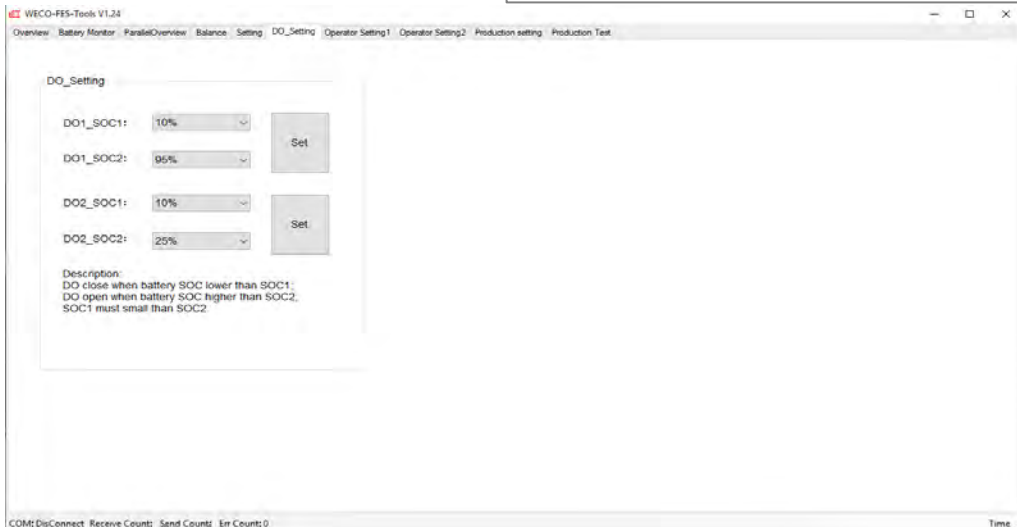
UNITS IN PARALLEL



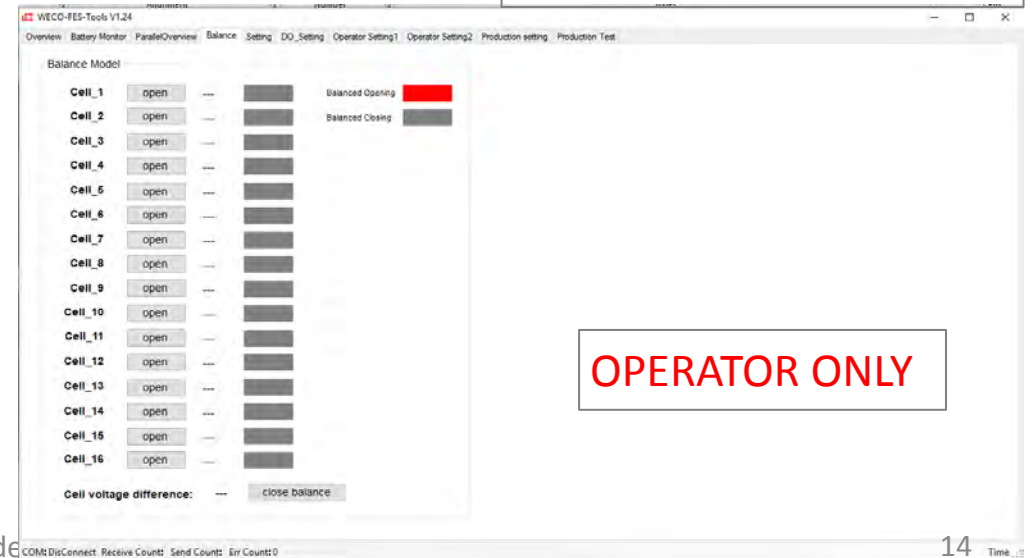
CHANGE INVERTER PROTOCOL



SET THE DRY CONTACTS



SINGLE CELL EQUALIZER



OPERATOR ONLY



OPERATOR ONLY

WECCO-FES-Tools V1.24

Overview Battery Monitor ParallelOverview Balance Setting DO_Setting Operator Setting1 Operator Setting2 Production setting Production Test

Setting

Setting	Setting Value	label559	Current Value
Auto Exit Sleep Interval Time	<input type="text"/>	Set	— H
Auto Exit Sleep Duration	<input type="text"/>	Set	—
Contactor Keep Close Time Ever Cell Voltage Low when battery start	<input type="text"/>	Set	— S
Charge Current Limit when TEMP Very Low	<input type="text"/>	Set	— A
Max Charge Current Send To Inverter	<input type="text"/>	Set	— A
Max Discharge Current Send To Inverter	<input type="text"/>	Set	— A

Just for Test

Temperature Sensor 1:	<input type="text"/>	<input type="checkbox"/> Check To Set	Set	— °C
Temperature Sensor 2:	<input type="text"/>	<input type="checkbox"/> Check To Set		— °C
Temperature Sensor 3:	<input type="text"/>	<input type="checkbox"/> Check To Set		— °C

Attention Must Check the box and set will effective
If not Check the box and set will into normal

COM: Disconnect Receive Count: Send Count: Err Count:0

Time ..

WECCO-FES-Tools V1.24

Overview Battery Monitor ParallelOverview Balance Setting DO_Setting Operator Setting1 Operator Setting2 Production setting Production Test

Setting

Setting	Setting Value	label568	Current Value
Battery Voltage High Cutoff	<input type="text"/>	Set	— V
Battery Voltage High Cutoff Time	<input type="text"/>		— S
Battery Voltage High Recovery	<input type="text"/>		— V
Battery Voltage High Recovery Time	<input type="text"/>	Set	— S
Battery Voltage Low Cutoff	<input type="text"/>		— V
Battery Voltage Low Cutoff Time	<input type="text"/>		— S
Cell Voltage High Cutoff	<input type="text"/>	Set	— V
Cell Voltage High Cutoff Time	<input type="text"/>		— S
Cell Voltage High Recovery	<input type="text"/>		— V
Cell Voltage High Recovery Time	<input type="text"/>	Set	— S
Cell Voltage Low Cutoff	<input type="text"/>		— V
Cell Voltage Low Cutoff Time	<input type="text"/>		— S
Discharge TEMP High Cutoff	<input type="text"/>	Set	— °C
Discharge TEMP High Recovery	<input type="text"/>		— °C
Discharge TEMP High Cutoff Time	<input type="text"/>		— S
Discharge TEMP Low Cutoff	<input type="text"/>	Set	— °C
Discharge TEMP Low Recovery	<input type="text"/>		— °C
Discharge TEMP Low Cutoff Time	<input type="text"/>		— S

Setting Value	Current Value
Charge TEMP High Cutoff	<input type="text"/> — °C
Charge TEMP High Recovery	<input type="text"/> — °C
Charge TEMP High Cutoff Time	<input type="text"/> — S
Charge TEMP Low Cutoff	<input type="text"/> — °C
Charge TEMP Low Recovery	<input type="text"/> — °C
Charge TEMP Low Cutoff Time	<input type="text"/> — S
Discharge Current High Limit Level1	<input type="text"/> — A
Discharge Current High Time Level1	<input type="text"/> — S
Discharge Current High Recovery Time Level1	<input type="text"/> — S
Discharge Current High Limit Level2	<input type="text"/> — A
Discharge Current High Time Level2	<input type="text"/> — S
Discharge Current High Recovery Time Level2	<input type="text"/> — S
Charge Current High Limit	<input type="text"/> — A
Charge Current High Time	<input type="text"/> — S
Charge Current High Recovery Time	<input type="text"/> — S

COM: Disconnect Receive Count: Send Count: Err Count:0

Time ..

WECCO-FES-Tools V1.24

Overview Battery Monitor ParallelOverview Balance Setting DO_Setting Operator Setting1 Operator Setting2 Production setting Production Test

Parameter Configuration Table

FileName: Import Export Set

Battery Management System Parameter List

Production Set

0A Calibration:	0A	Set
Current Calibration:	5A	Set
Battery Balance:	Enable	Set
GainValue:	<input type="text"/>	Set
RunTime Clear:	<input type="text"/>	Set
BatteryCycle Clear:	<input type="text"/>	Set
Energy and Time count Clear:	<input type="text"/>	Set
Product Serial Number:	<input type="text"/>	
Set		
Restore BMS Default Parameters:	Set	
<input type="checkbox"/> DataSave 1		

COM: Disconnect Receive Count: Send Count: Err Count:0

Time ..