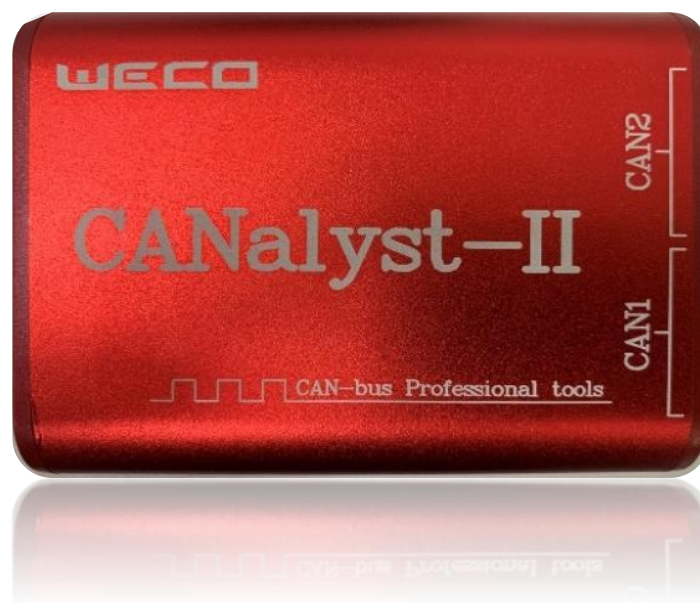


## **CANalyst-II Analyzer Manual**



**Internal Use Only**

Only for Expert approved WeCo installers

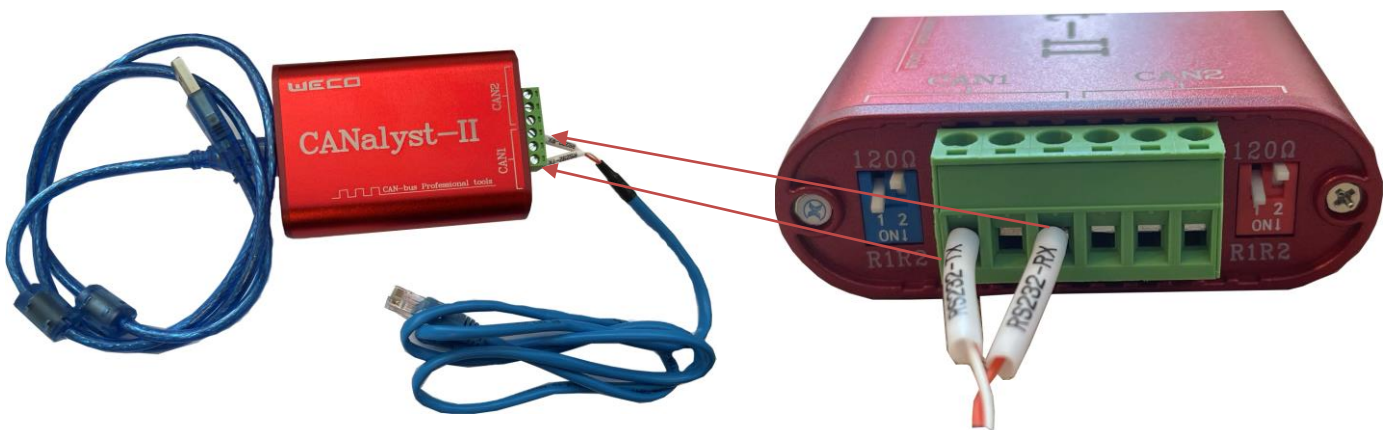
# Chapter 1: Appearance and interface

## 1. Appearance of the product

- CANalyst-II analyzer intelligent CAN interface adapter: A standard USB interface, an 6-pin binding post terminals (CANalyst-II analyzer for 6 pin), CAN-bus interface is available.
- Power indicator light of our products is red except CANalyst-II analyzer for highlighted in red.
- When LED- CAN1 Channel1 indicator light is blue indicate the transmitting or receiving state of the channel1. When the USB-CAN adapter insert into a USB interface, the power is turned on, the LED- CAN1 indicator light flashes twice for system self-test.
- When LED- CAN2 Channel2 indicator light is red indicate the transmitting or receiving state of the channel 2. When the USB-CAN adapter insert into a USB interface, the power is turned on, the LED- CAN2 indicator light flashes twice for system self-test.



Figure 1: CANalyst-II analyzer appearance



## 2. Signal Definition

CANalyst-II analyzer products	
Name	Description
R1	Terminal resistance R1, Down to the ON state, the internal 120 ohm resistor will be access to the bus.
R2	Terminal resistance R2, in parallel with R1, same effect as R1
H	CAN_H signal cable
S	Shielded wire interface, unconnected with the CAN transceiver directly, connected with resistors and capacitors.
L	CAN_L signal cable
PWR	Power indicator light
SYS	System status indication, under normal circumstances are often off state
CAN1	CAN1 channel signal
CAN2	CAN2 channel signal

### Method of operation:

**CAN Transmit:** When a user application calls the Transmit Function, a message will be push to the channel T-Buffer (it's a FIFO buffer) in USB-CAN adapter immediately, then the CAN Controller transmit it to the CAN-Bus.

**CAN Receive:** The CAN Controller receives a CAN frame from CAN-Bus, and push it to the channel R-Buffer (also a FIFO buffer) in USB-CAN adapter immediately, when a user application call the Receive-Function, the message will be return.

## 3. Factory configuration

- i. CAN-bus Baud rate: 1Mbps;
- ii. Acceptance mask register: 0xFFFFFFFF, means to accept all CAN frame;
- iii. Termination resistor is selectable: connect the R+ and R- (dial down the corresponding switch for CANalyst-II analyzer to get 120Ohm internal resistor.

Note: ensure that there are two 120 ohm termination resistors on the CAN-bus; otherwise it will lead to the CAN-bus work abnormality.

The above description is effective for each CAN channel.

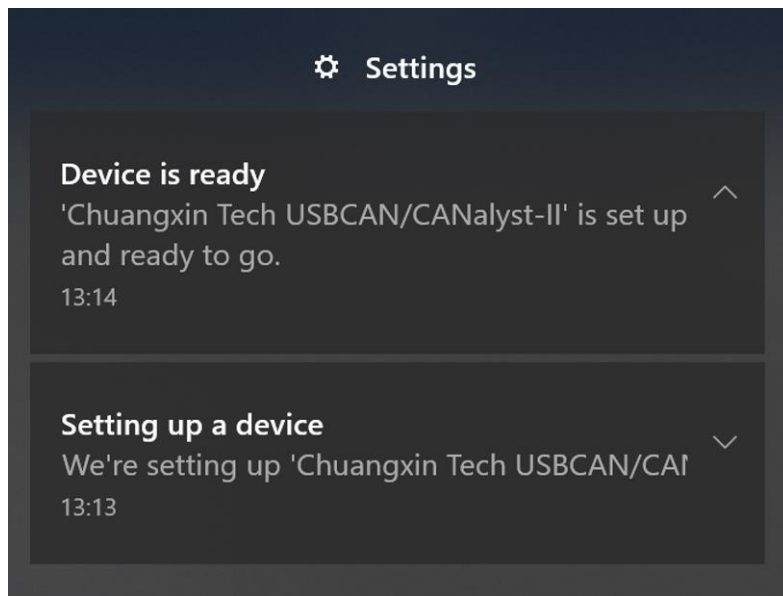
## Chapter 2: Driver installation and USB-CAN tool

### 1. Driver installation

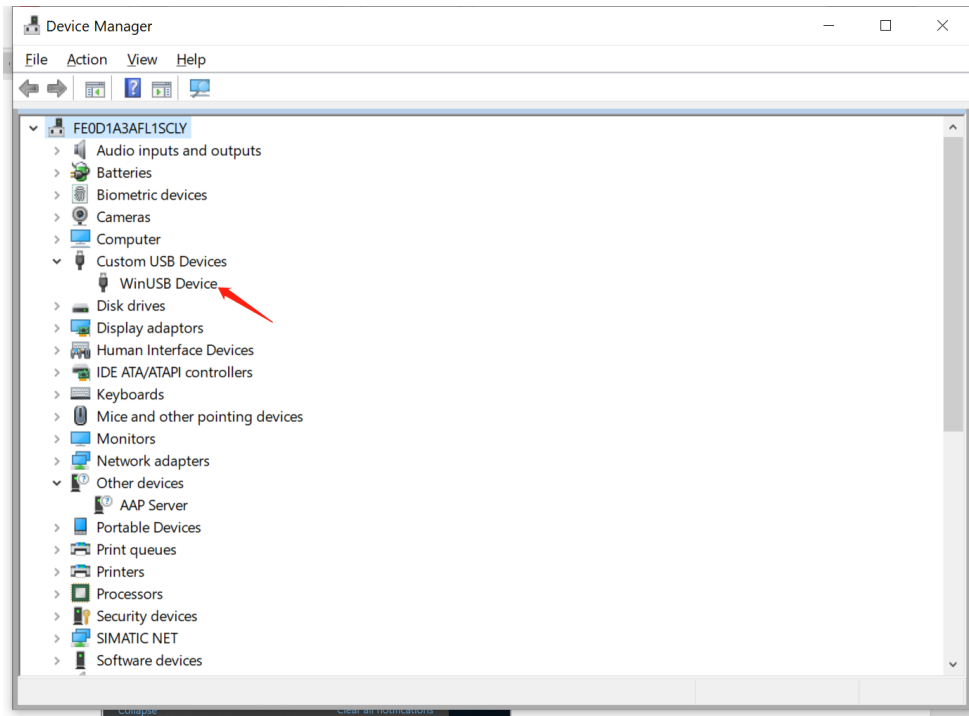
#### 1.1 Windows 10

Connect USB-CAN intelligent interface module to the PC with USB cable correctly. The Windows will then auto run an installation automatically.

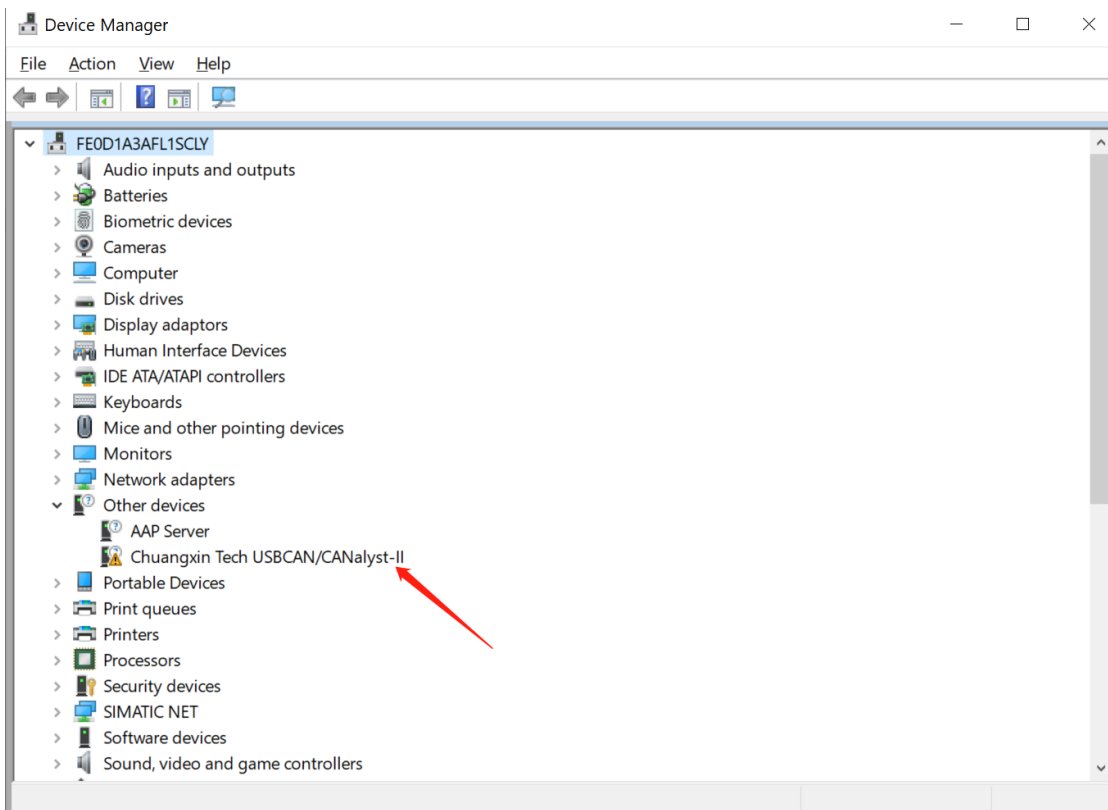
The picture shown below is from the Notification panel of windows system:



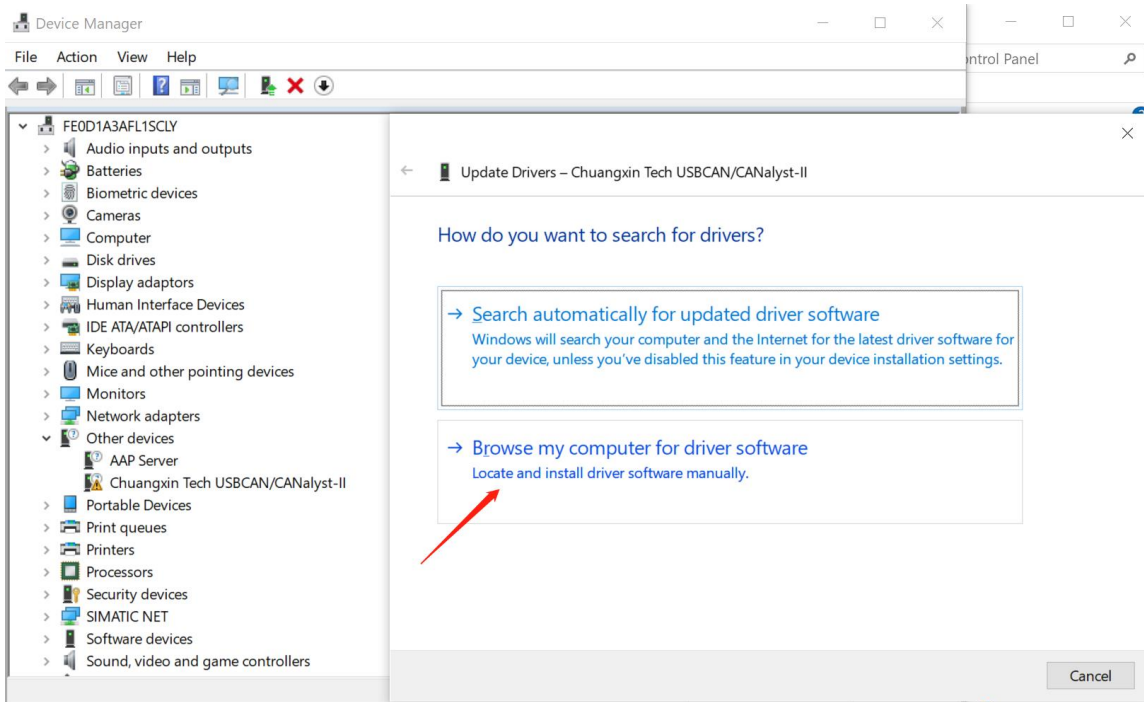
After the installed the USBCAN/CANalyst-II, " WinUSB Device " will be added to the directory of device manager.



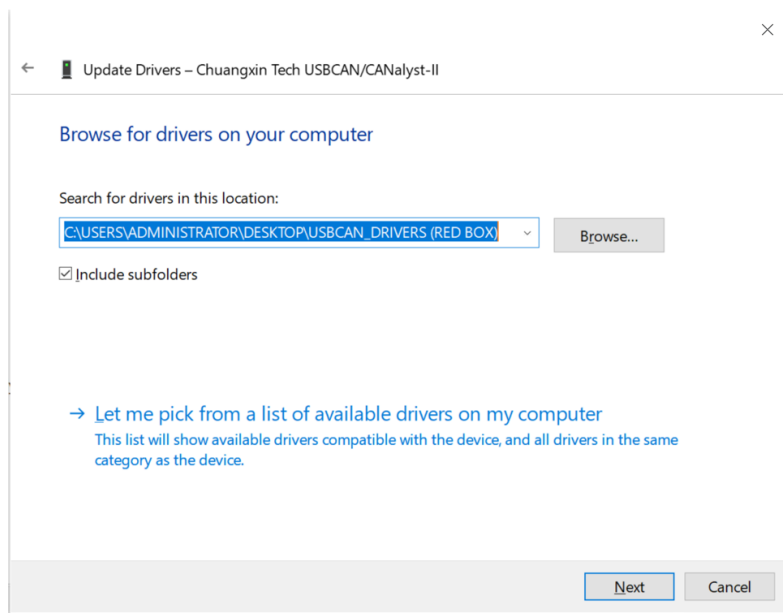
If the windows 10 do not install the device automatically, Right click "My Computer" and select "Properties" and select the "Device Manager", find "Chuangxin Tech USBCAN/CANalyst-II" in other devices list:



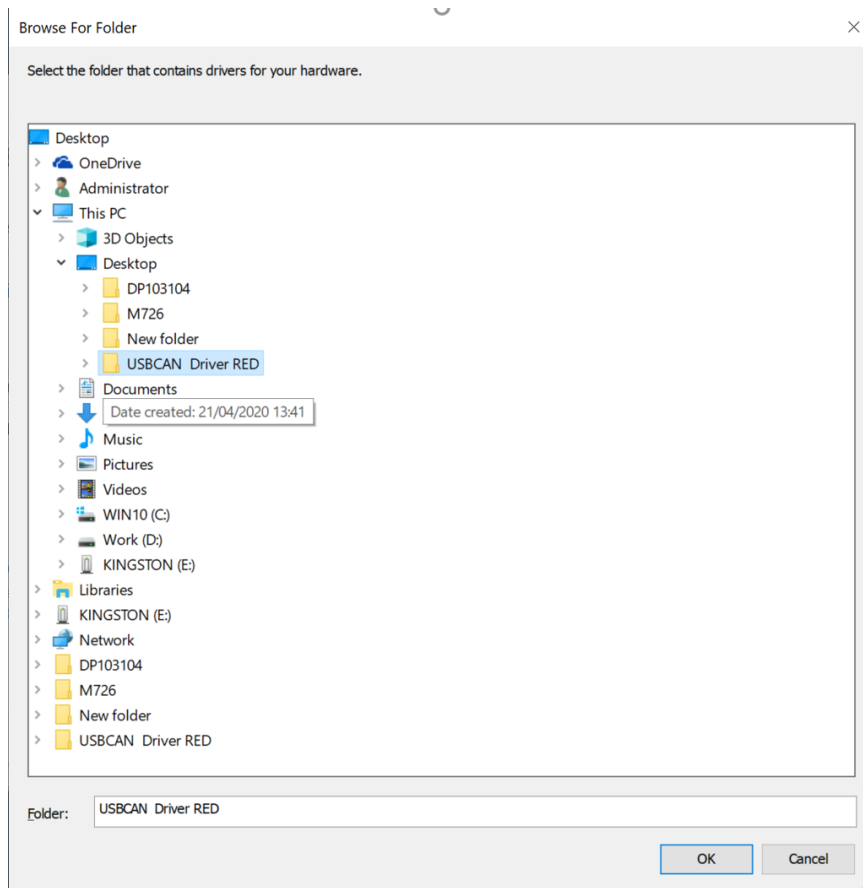
Right click "Chuangxin Tech USBCAN/CANalyst-II" , and select "Update Driver" from the menu:



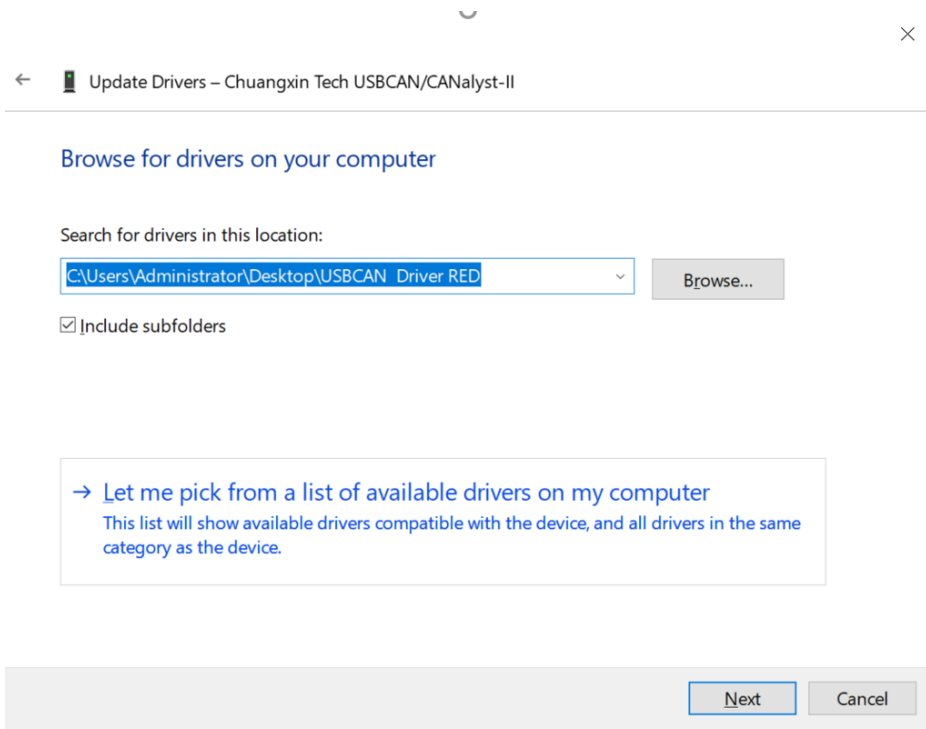
click “Browse for drivers on your computer”, and Then click “Browse” button to browse the driver folder:



Use the “Browse for Folder” window selects where the driver is:

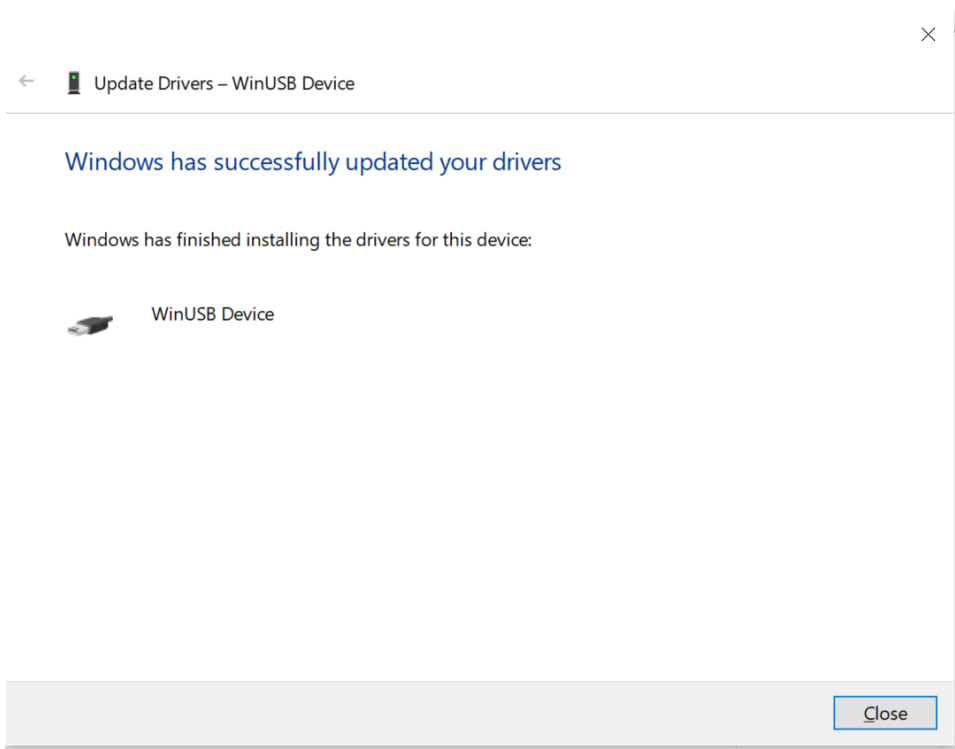
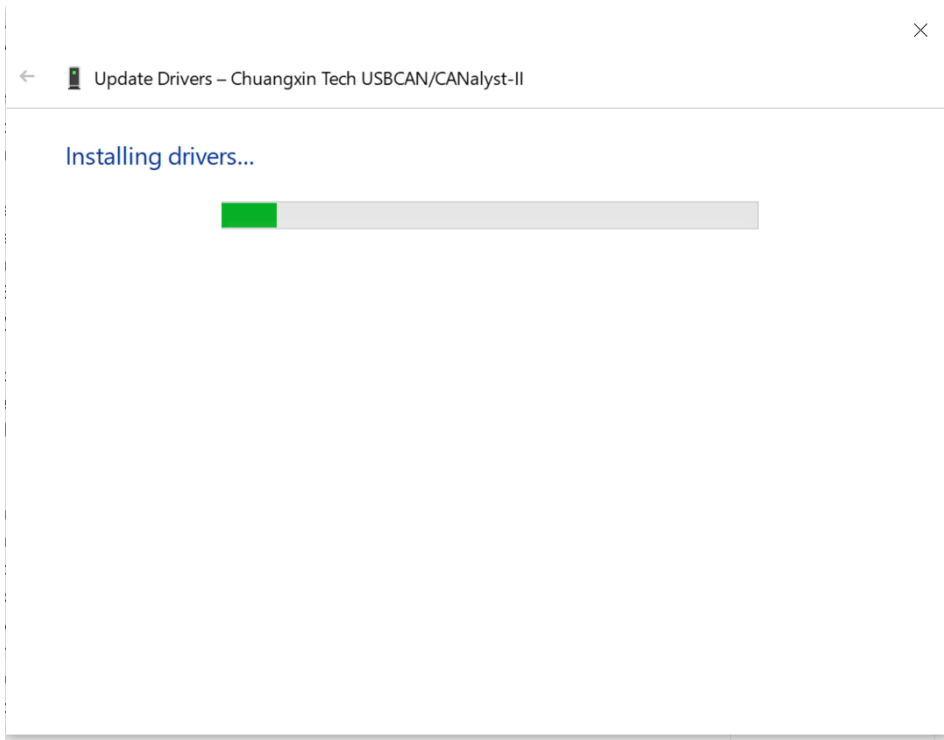


Click "OK" to finish selection:

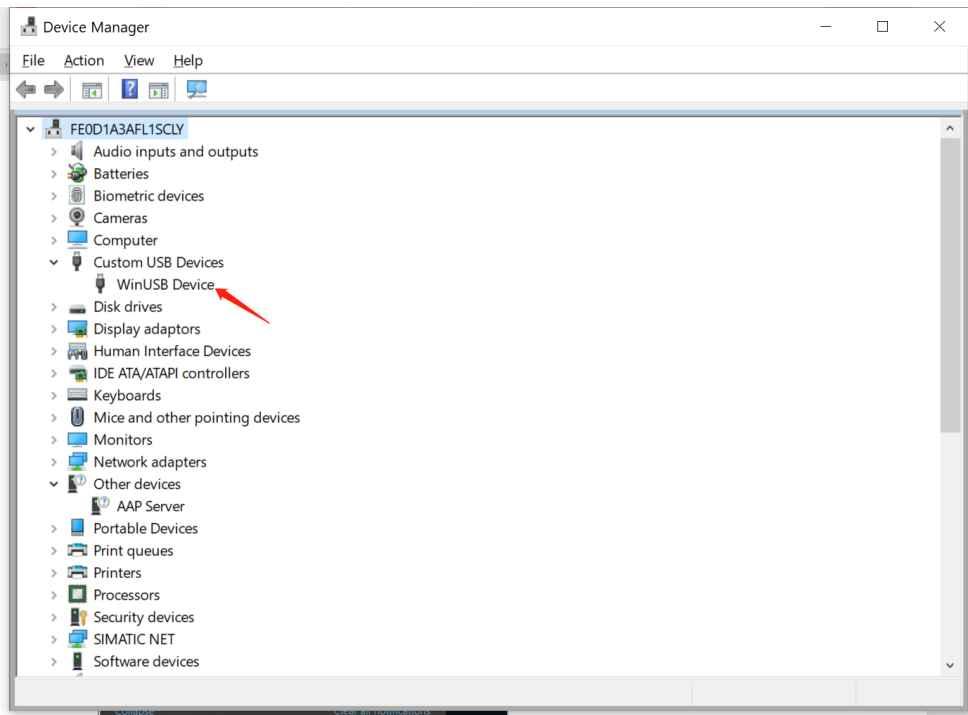


Click "Next" to search and install driver:





After installation, " WinUSB Device " will be added to the directory of device manager.



### Additional Tools in case of missed communication.

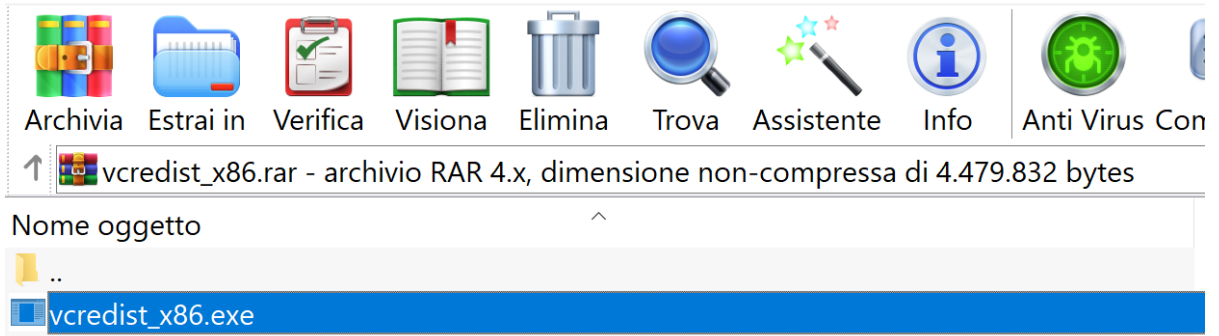
Some windows version are required to have a C++ driver in order to facilitate the device communication.

### Install the VCREDIST\_86.exe



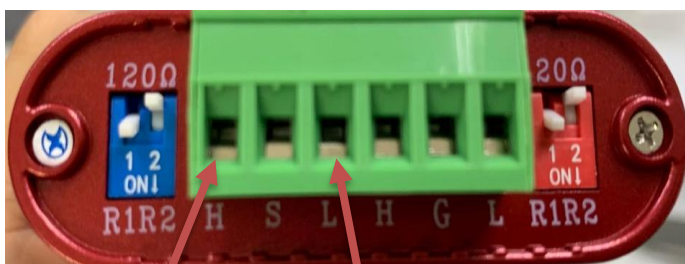
### Unzip the file and launch the EXE

File Comandi Utilità Preferiti Opzioni ?



1. Allows windows to install the software,
2. agree to the terms and conditions
3. Restart your PC

## USBCAN wire connection



RS232-TX

RS232-RX



Remark: Use the RS 232-RJ45 provided with the batteries and/ or with the CAN Converter

-----

Now you are ready to use the CANAnalyst to set up the the MASTER HUB.

Ask to [service@weco.uk.com](mailto:service@weco.uk.com) for the latest version of the HUB firmware available and  
always install the latest version available

Follow the HUB Instructions from now on.